



---

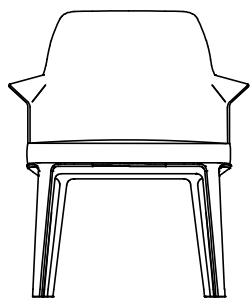
## DESCRIPTION

|                        |   |
|------------------------|---|
| <b>Typology</b>        | Chair   |
| <b>Base</b>            | Solid wood  |
| <b>Seat / Backrest</b> | Parts in multi-density flexible polyurethane and parts in moulded flexible polyurethane |
| <b>Pre-cover</b>       | Polyester fibre   |
| <b>Final cover</b>     | Not removable cover in fabric or leather  |

---

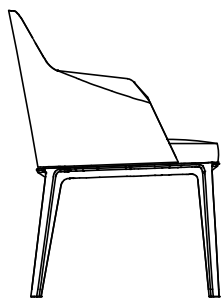
## DIMENSIONS

### With arms



635  
25"

780  
30 3/4"



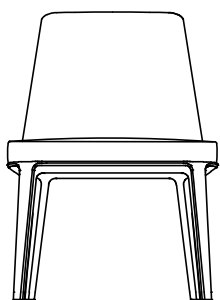
480  
19"

630  
24 3/4"

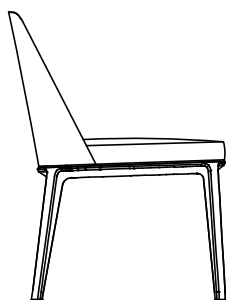
600  
23 1/2"



### Without arms



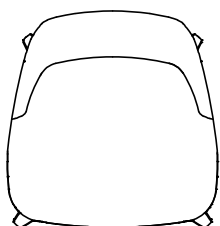
780  
30 3/4"



480  
19"

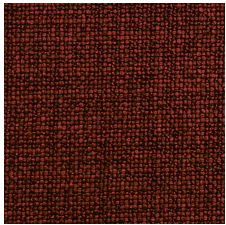
570  
22 1/2"

600  
23 1/2"

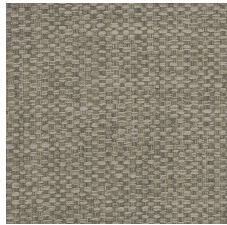


## SEAT AND BACKREST FINISHES

### Fabric



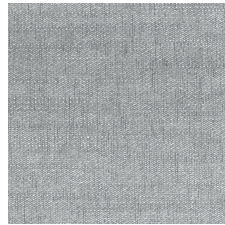
Caleo



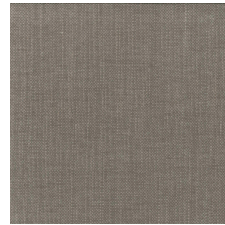
Chios



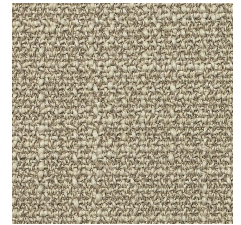
Eraclea



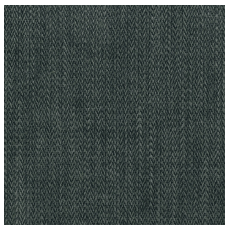
Lima



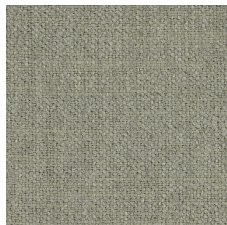
Siviglia



Antea



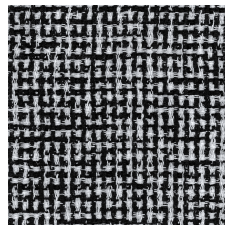
Itaca



Kushiro



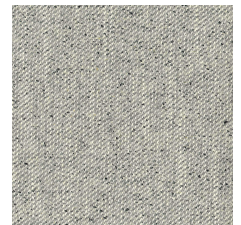
Micene



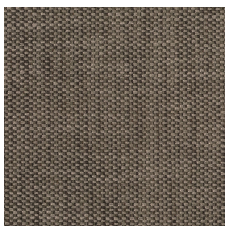
Milos



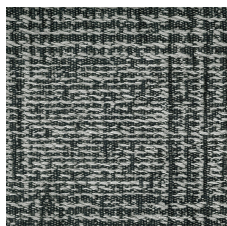
Olimpia



Oxford



Rabat



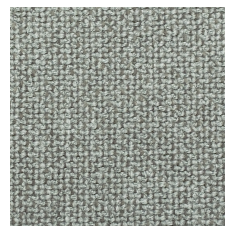
Sendai



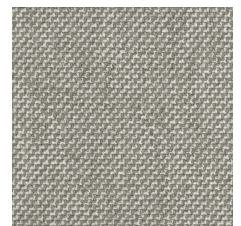
Sparta



Agadir



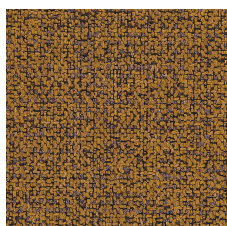
Arcadia



Argo



Hannover



Kitami



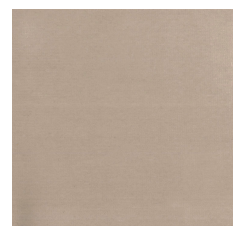
Naxos



Nayoro



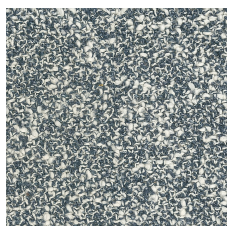
Orleans



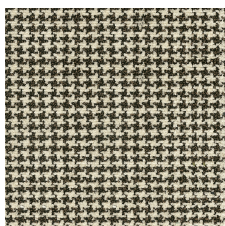
Persia



Skyros



Brest



Nancy



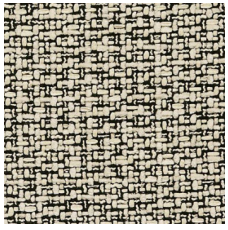
Siro



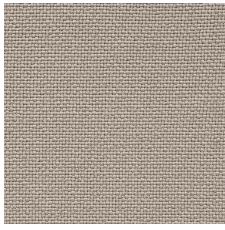
Tebe



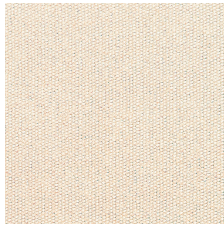
Dundee



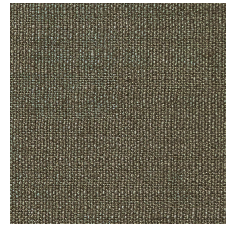
Sheffield



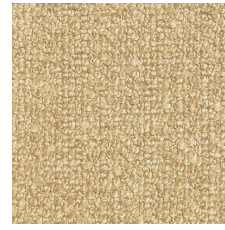
Norwich



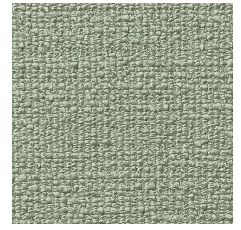
Irtati



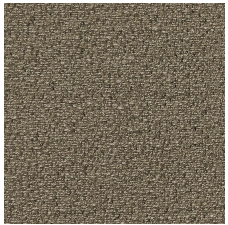
Kiala



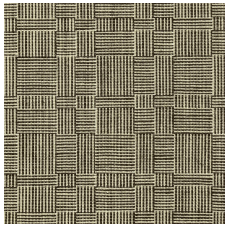
Carson



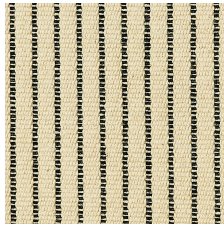
Komi



Molai



Janaki



Yushan

## Leather



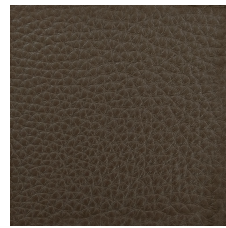
Spring



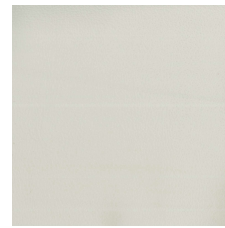
Colors



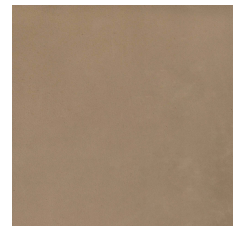
Silk



Deep



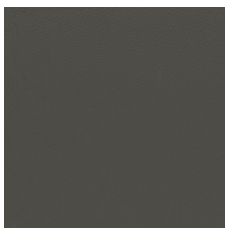
Special



Invecchiata



Nabuk



Soft

---

## STRUCTURE FINISHES

### Wood



Woods