



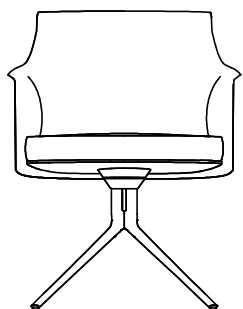
---

## DESCRIPTION

<b>Typology</b>	Chair
<b>Seat / Backrest</b>	Multi-density flexible polyurethane seat Mulded flexible polyurethane backrest
<b>Base</b>	Die-cast aluminium painted, base with automatic returning mechanism
<b>Pre-cover</b>	Polyester fibre
<b>Final cover</b>	Fabric or leather not removable
<b>Features</b>	Base with automatic returning mechanism

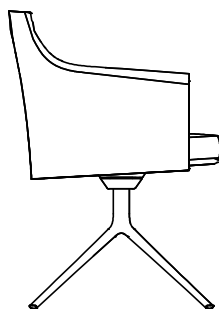
## DIMENSIONS

Poliform\_sedia\_STANDFORD\_BRIDGE\_02\_414px\_con braccioli



665  
26 1/4"

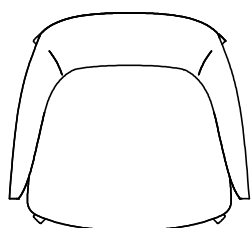
800  
31 1/2"



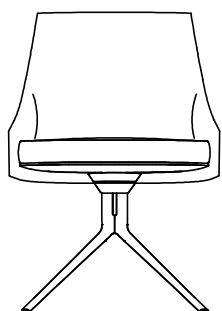
460  
18"

620  
24 1/2"

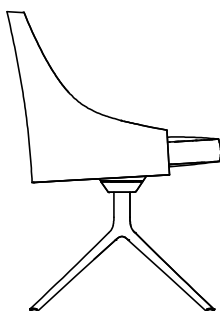
560  
22"



## Without arms



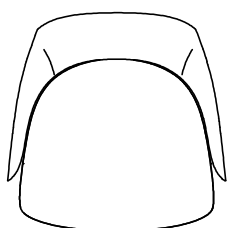
800  
31 1/2"



460  
18"

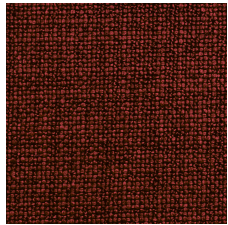
570  
22 1/2"

560  
22"

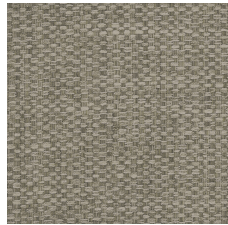


## SEAT AND BACKREST FINISHES

### Fabric



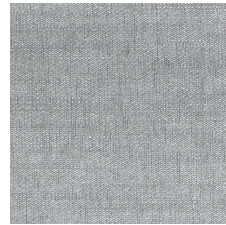
Caleo



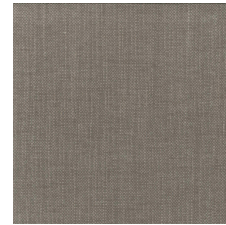
Chios



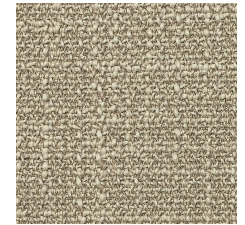
Eraclea



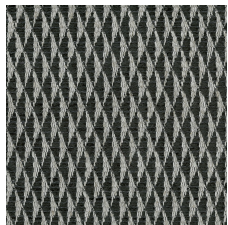
Lima



Siviglia



Antea



Corinto



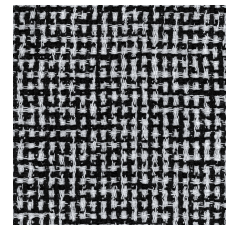
Itaca



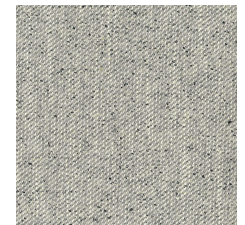
Kushiro



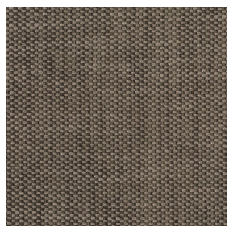
Micene



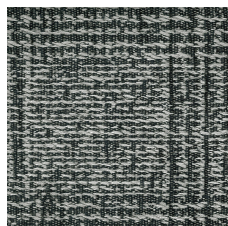
Milos



Oxford



Rabat



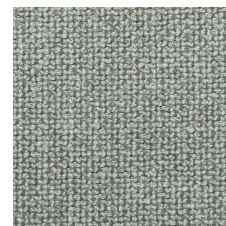
Sendai



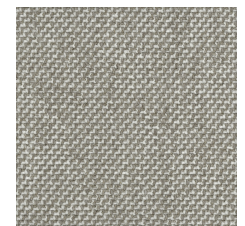
Sparta



Agadir



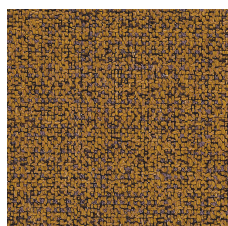
Arcadia



Argo



Hannover



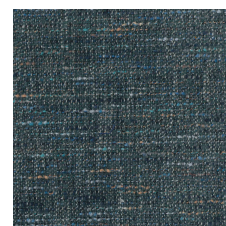
Kitami



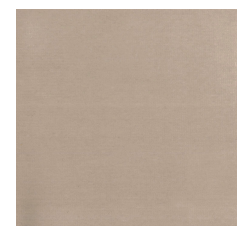
Naxos



Nayoro



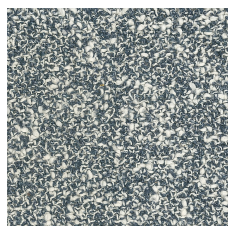
Orleans



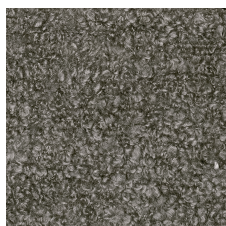
Persia



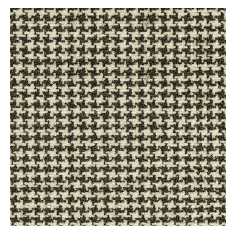
Skyros



Brest



Lero



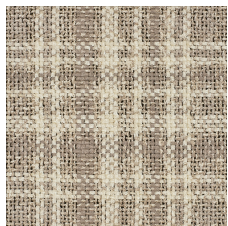
Nancy



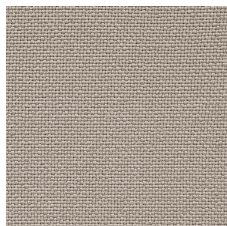
Siro



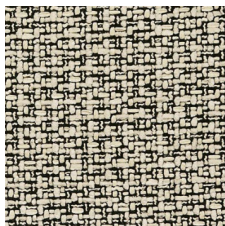
Tebe



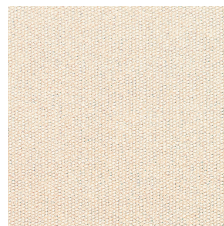
Dundee



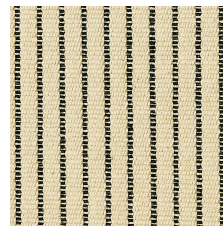
Norwich



Sheffield



Irati

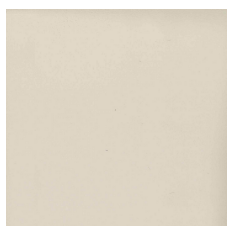


Yushan

## Leather



Spring



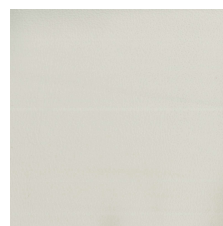
Colors



Silk



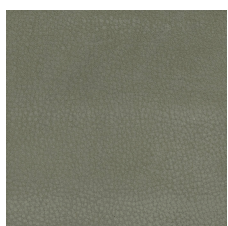
Deep



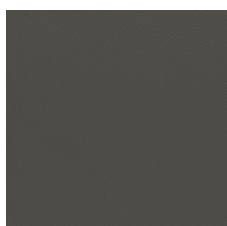
Special



Invecchiata



Nabuk



Soft

---

## STRUCTURE FINISHES

### Metal parts



Metal parts