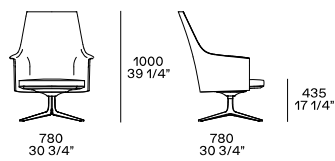




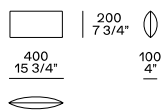
DESCRIPTION

Typology	Armchair
Structure	Compact polyurethane, with inside element in flexible polyurethane
Final cover	Not removable cover in fabric, leather or hide
Under-seat	Compact polyurethane, cover in fabric or leather not removable
Seat cushion	Flexible multi-density polyurethane, pre-cover in polyester padding
Swivel base	Die-cast aluminium
Structure kidneyrest cushion	Compact polyurethane
Pre-cover kidneyrest cushion	Parts in white cotton with feather and parts of polyester padding
Final stretched cover kidneyrest cushion	Removable in fabric and not removable in leather

DIMENSIONS

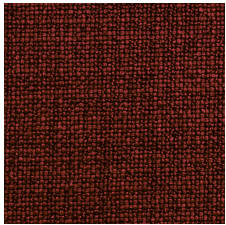


Kidneyrest cushion

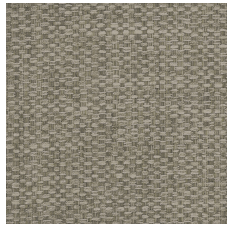


COVER FINISHES

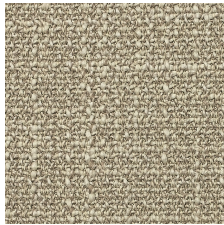
Fabric



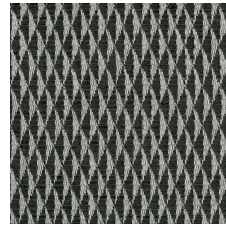
Caleo



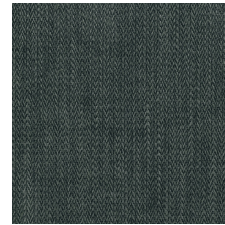
Chios



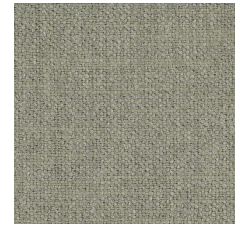
Antea



Corinto



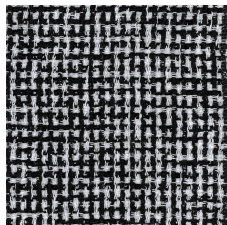
Itaca



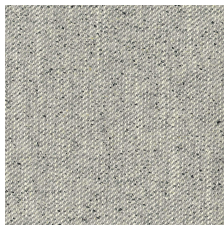
Kushiro



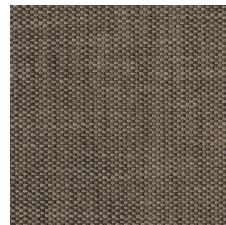
Micene



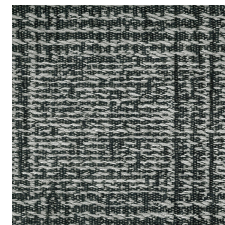
Milos



Oxford



Rabat



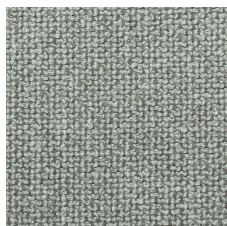
Sendai



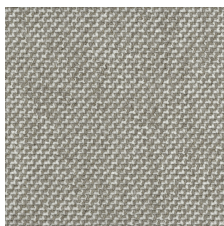
Sparta



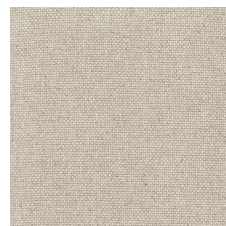
Agadir



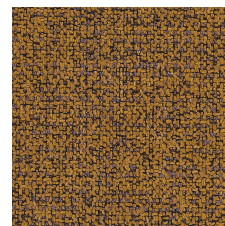
Arcadia



Argo



Hannover



Kitami



Naxos



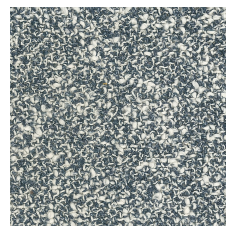
Nayoro



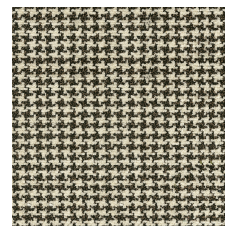
Orleans



Skyros



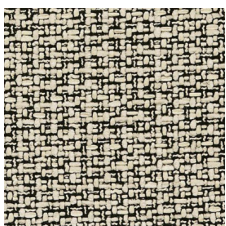
Brest



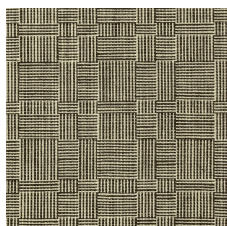
Nancy



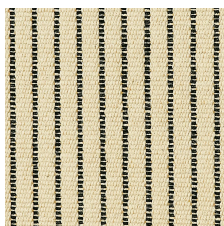
Dundee



Sheffield



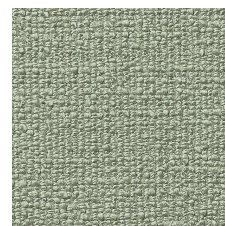
Janaki



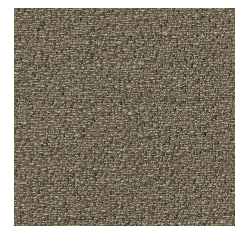
Yushan



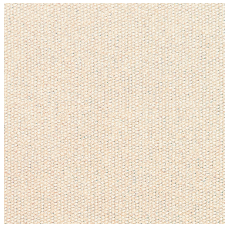
Carson



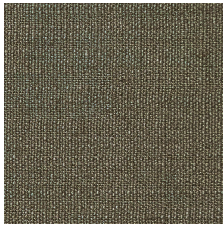
Komi



Molai



Irati

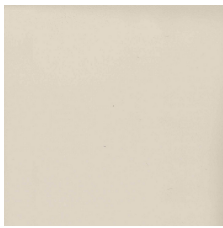


Kiala

Leather



Spring



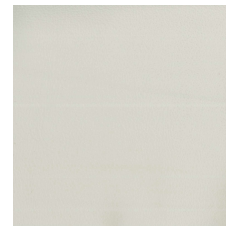
Colors



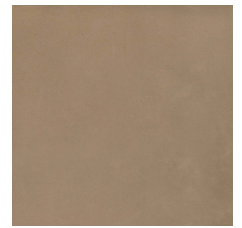
Silk



Deep



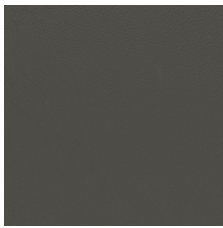
Special



Invecchiata

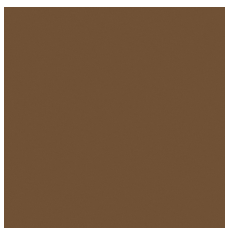


Nabuk



Soft

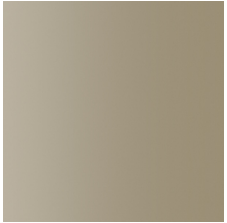
Hide



Hide

SWIVEL BASE FINISHES

Metal parts



Metal parts