

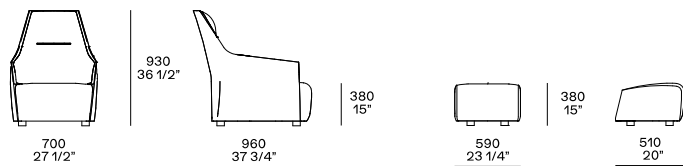


DESCRIPTION

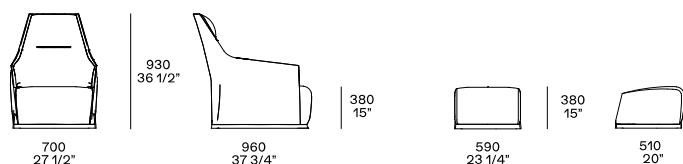
| | |
|---------------------------|--|
| Typology | Armchair |
| Structure | Double-density moulded flexible polyurethane |
| Seat / Backrest | Double-density moulded flexible polyurethane |
| Feet | Plastic cylinder or swivel base |
| Pre-cover | Parts in cotton cloth with inner side in feathers and parts in polyester padding |
| Final cover | Removable cover in fabric or leather |
| Features | Normal double stitching or drawstring stitching in the colours as for samples |
| Slipcover features | Perimetral edge in grosgrain in the same colour of the drawstring stitching |

DIMENSIONS

Stretched cover-tesato

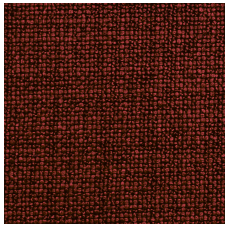


Slipcover

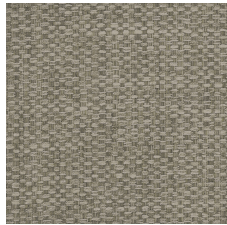


FINAL COVER FINISHES

Fabric



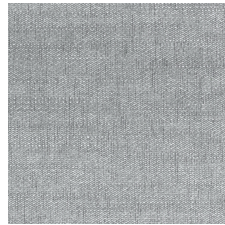
Caleo



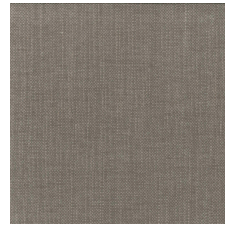
Chios



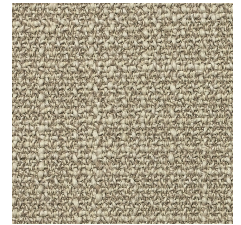
Eraclea



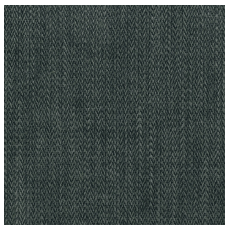
Lima



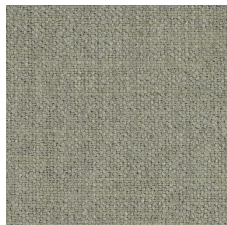
Siviglia



Antea



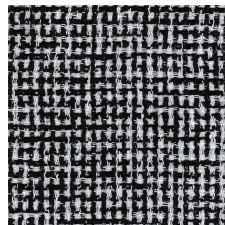
Itaca



Kushiro



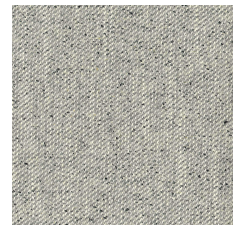
Micene



Milos



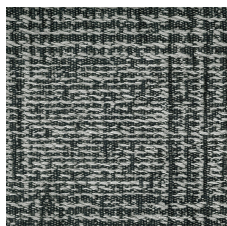
Olimpia



Oxford



Rabat



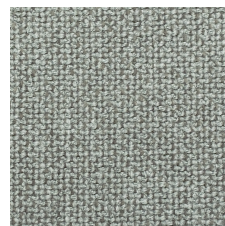
Sendai



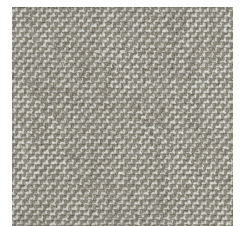
Sparta



Agadir



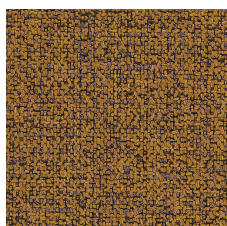
Arcadia



Argo



Hannover



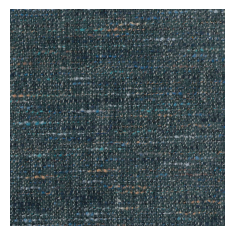
Kitami



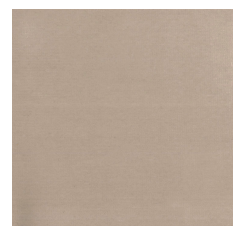
Naxos



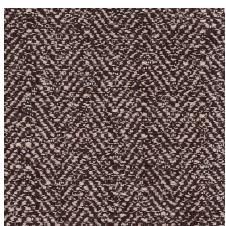
Nayoro



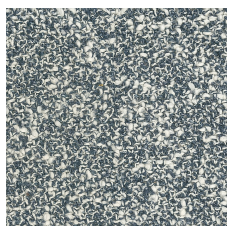
Orleans



Persia



Skyros



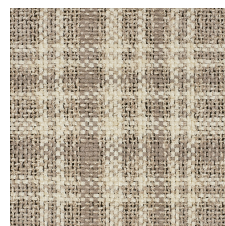
Brest



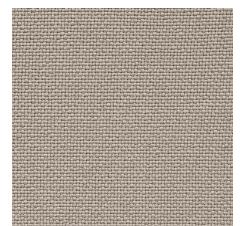
Lero



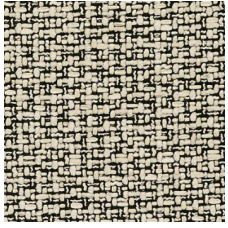
Tebe



Dundee



Norwich

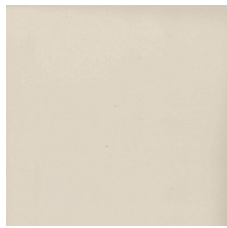


Sheffield

Leather



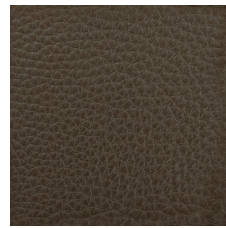
Spring



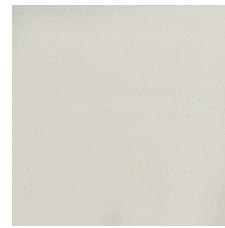
Colors



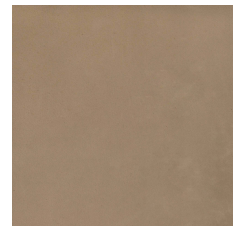
Silk



Deep



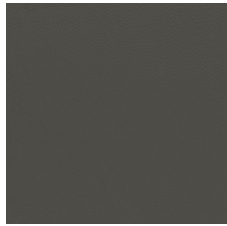
Special



Invecchiata



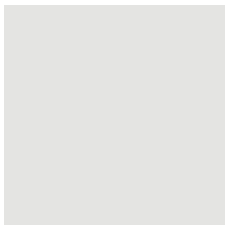
Nabuk



Soft

AESTHETICAL DETAILS FINISHES

Details



Silk profile



Stitching profile